

# WATER DRAGON 2012


-- SECRETS UNVEILED --

We are approaching another Dragon year! It is one of the most popular and 'BIG' animal sign out of the twelve zodiacs. But this year the dragon is 'submerged' under the ocean water, something we have not seen since sixty years ago. So what does it imply? What does this dragon have in store for us: for our business, health and relationship? What should we be prepared for and what are the things we should be mindful of? Let us begin our journey to unveil the secret of the Water Dragon...



## Key elements 2012: 壬 yang water on 辰 yang earth

The first thing we need to look at is the year pillar of 2012, which will give us a broad outlook of the year's characteristics.

 The top element, yang water stem, signifies the ocean: forceful and dynamic. This will shape the first half of 2012 to be a very unpredictable and unstable time, just like the restless ocean. There is a dual quality in it; on one hand you can ride on its powerful wave but on the other hand you can be swallowed and drowned if you are not careful. H9 will also mark 2012 with new inventions and brightness; as water signify purification and intelligence. The world's energy is trying to shift to a new direction and awareness.

The other element, Dragon, yang earth, is a wet spring earth. It also has hidden wood: sprouts of seeds ready to grow. This element symbolizes strong, ambitious and idealistic character, ready to burst with new ideas. New growths and leaders of governments are emerging everywhere. Since Dragon is a water pot, the hidden water inside symbolizes tough competition in 2012, be it in business or personal life. Lastly, the hidden earth is a manifestation of power. It will be the year of fighting prides and clashing ideas, where politics and governments fight for gaining power and control over the weary societies and instability.

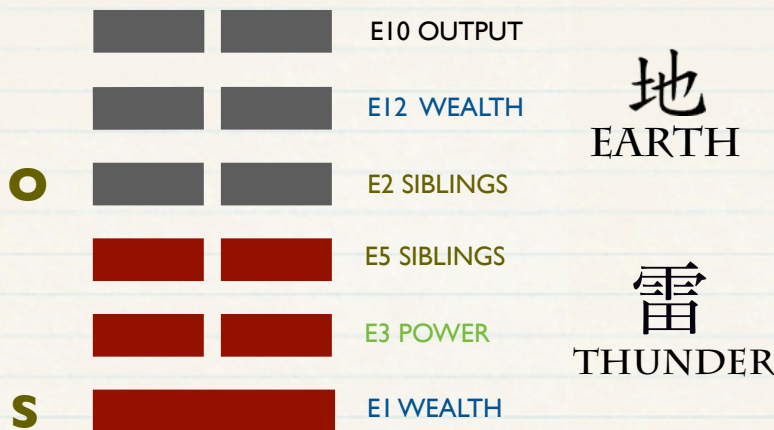


When these two elements are put together, it implies the dragon is submerged underneath the ocean water. There will be a lot of uncertainties on the surface. But the submerged dragon is not sleeping; it is swimming underneath the water ready to surface at any time. The world shall see the emerging new leadership, new ideas and system, a new era and new beginning towards mid of 2012, when the dragon finally emerge.

**“2012 will be an unpredictable but hopeful year. It is the revival: a new beginning.”**

Let us look at I Ching for 2012 to gain a better understanding:

# I-CHING DIVINATION OF 2012



## Hexagram #24: FU

If we look at the relationship between the subject and object line, the object line (Earth) is trying to conquer the subject (Water) which means frictions at the beginning, but at the end there is harmony due to a combinations between the two (E1 and E2). This implies that if we are patient, flexible enough and adjust ourselves to the current circumstances, things will turn in our favour at the end.

There are two wealth lines appear in this hexagram, including the subject line itself. This means opportunities to make money will be plenty but there are many competitions around as well, due to the strong presence of siblings lines. We should be smart enough to turn our foes into our friends at these troubled times. Again, wealth is in a weak position this year. Guard your wealth; be prepared for losses at the beginning, as there will be initial problems and unstable circumstances during the first half of the year.

Although weak, thunder will grow stronger and overcome the earth above. In general, the world is turning for the better. We should stay persistent and keep doing the right thing. I Ching advises us to keep calm and carry on.

### HEXAGRAM #24 - FU EARTH OVER THUNDER 'TURNING POINT'



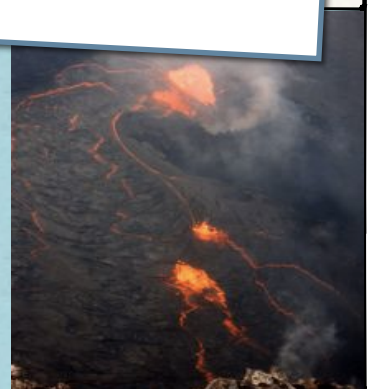
The image of this hexagram according to the Book of Change is that of **renewal** and **revival**. A turning point is finally reached. Negative yin energy is declining, being replaced by positive ones. Thunder grows and breaks the silence, marking the coming of first rain of spring. Animals are awakened from its hibernation, gathering support and energy to welcome the new beginning

#### NOTE

If we compare the imageries between the elements and IChing for 2012, both of them are pointing at the same message: that of a new beginning, turning point yet unstable times. Therefore the key to survive is perserverance and high adaptability, knowing that at the end things will turn for the better.

### More from this hexagram

- Earth over thunder; thunder is exploding underneath the earth. It depicts possible major volcanic eruption or political/social upheavals at the Southwestern parts of the world.
- The image of Kun (mother) and the rebellious Zhen (eldest son) exploding underneath. It implies frictions in the families caused by adult sons towards their parents; good communication is important in this troubled times.



4th February 2012, 18.40

Hour	Day	Month	Year
乙 H2 Yin Wood	乙 H2 Yin Wood	壬 H9 Yang Water	壬 H9 Yang Water
酉 E10 Rooster Yin Metal	未 E8 Ram Yin Earth	寅 E3 Tiger Yang Wood	辰 E5 Dragon Yang Earth

On another angle, we can use Four Pillars of Destiny to determine further the specific type of energy year 2012 has, as well as favourable and unfavourable elements for the year.

Although the lunar new year falls on the 23rd of January 2012, the official shift of energy to the new year is based on Hsia / Chinese Solar calendar, which is on the 4 February 2012, 1840 hours. This is what we will use to erect the birthchart.

## YEAR OF 2012 - 4 PILLARS OF DESTINY

As we can see from the chart above, there are dominant wood and water elements, with some earth and metal. Wood is very strong and prosper during spring season, and the overall chart is rather wet and cold. Fire is the most needed element in this chart and therefore, the world's condition and economic recovery will depend on fire industries. Wood is the second most favourable element as it supports fire. Earth will be the one to suffer the most here as without fire, earth will be too wet and under pressure. Meanwhile, water and metal will be unfavourable elements for this chart. The best timing for this year is when the fire emerged. Therefore if you want to make any sort of investments or open a new venture, it is good to do it at the end of spring, towards beginning of summer (April-May). Below we will elaborate further what the element's implications to various aspects of our life.

### Implications of the elements' dynamics into various aspects

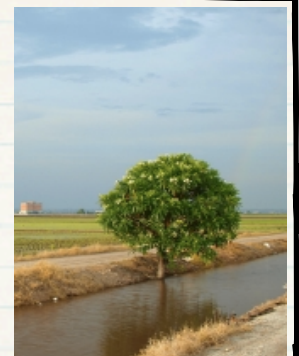


#### politics

Political turmoils will keep on haunting in the first half of 2012. There will be a lot of pressure from the northern countries: North America and Europe (water) towards the China and eastern countries (wood). Dominant wood inside the chart symbolize the growing power of the eastern and developing countries in terms of political bargaining, especially towards the end of 2012. The seeds of emerging new leadership will grow with fresh ideas to improve current system, however it will take time to materialize due to the flooding implications of past mismanagements. Towards mid year there will be improvements in political conditions and calmer situation, that will contribute positively to the improvement of world economy.

#### climate

Climate uncertainties will still dominate in 2012, especially those related to water. Water related disasters will be more prominent, sea levels continue to rise and imbalanced moisture contents on the earth surface will continue to give natural disasters such as typhoons. The earth element that suffers this year also signify the condition of earth itself; more earthquakes and volcanic eruptions are expected



# IMPLICATION OF ELEMENTS INTO ASPECTS OF LIFE



## relationship

Pressures from work may elevate, be careful with hidden competitions and backstabbing from work as well as frictions with bosses. If times are unfavourable for you, keep calm and retreat at once. Romance department for this year may not be as busy as rabbit year in overall, but keep good communication flowing. This year is prone to clashes and frictions, be more understanding and hold your temper.

## economy and industries

Although the overall energy of the world is turning for the better, economic growth will still face though challenges in 2012. There will be fluctuations every now and then, and windows of opportunities to make money will be short with strong competitions. If you are doing your own business, be strategic and select your timing wisely. Below are overviews of the major industries and how they fare in 2012:

**Banking and finance** belong to metal elements, they will be unstable and risky in 2012. Be prepared to cut loss.

**Property and developments** are earth in nature. It is severely under attack therefore price will fall, but it will pick up slightly during mid year.

**Travel, transport and tourism** are water element industries and therefore not so auspicious. 2012 will see more accidents in transportation.

**Oil** prices will go up and in demand, as fire is a favourable element in 2012.

**Medical** field also belongs to fire element and therefore will fare well.

**Education** is of wood nature and it will still be on demand.

**Stockmarket** will peak in a short span of time, which is mid year when the fire is the strongest. Other than that it is rather volatile, trade carefully.

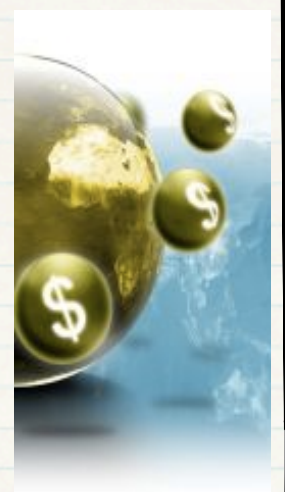
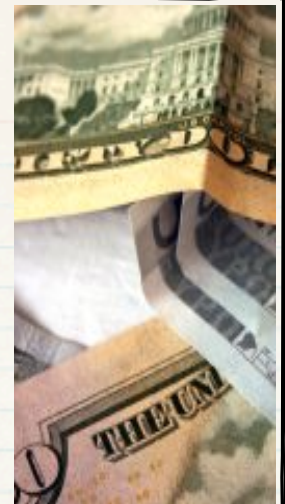
**Fashion and design** will fare well in 2012 as they are wood in nature.

**Hospitality and F&B** are of water nature and therefore will face stiff competition and low demands. Plan carefully before opening a new one in 2012.

**Shipping and logistics** will also be average.

**Natural resources** and **mining** in overall will be very weak as they are earth related fields. Gold and precious metals' prices will also drop further in 2012.

Lastly, **timber/ wood** related business as well as furnitures will pick up again in 2012



## FLYING STAR

### SIGNIFICANCE OF YEARLY STARS

5	1	3
4	6	8
9	2	7

**Star 6** in the centre is related to politics, defense and government systems, therefore civil sectors will be dominant. Healthcare, military and financial reforms will be the highlight in 2012

**Star 5** resides on the South East, on base star 4. Be cautious in romance and problems with an elderly woman. There will be potential major disaster on the South East nations of Asia Pacific regions

**Star 3** as quarrelsome star in South West mean riots, disasters or earthquakes in this part of the world, which coincides with IChing predicament.

**Star 2** is in the north; again it indicates the northern countries are the 'sickly' regions in 2012. In your families, beware of problems faced by your teenage sons. Be careful of your joints, kidney, and bones.

**Star 8** is on the west, which means in overall things will improve for the western regions compared to last year. It is sitting on the base star 7, which means IT and communication technology industry will still prosper this year.

## FLYING STAR 2012

	<b>S</b>			
	5	1	3	
<b>E</b>	4	6	8	<b>W</b>
	9	2	7	
	<b>N</b>			

### SOUTH - STAR 1

This star signify promotions and growth. If your door is facing south, it will be auspicious for academic success and recognition. Place a bowl of clear water on your south sector, or place your study/ working desk there.

### NORTH - STAR 2

This is a sickly and misfortune star. If your door is facing north, hang a strand of six metal coins or 6 rods windchimes. Alternatively, place a metal object to harmonize the area.

### SOUTHWEST - STAR 3

The nature of this star is quarrelsome. If your door is facing south west, cure with having red decors/ paintings or red coloured mat.

### EAST - STAR 4

There are potentials for romance and academic success with this star, if properly treated. Place a vase of fresh flower here for romance activation.

### SOUTH EAST - STAR 5

This is another problematic direction. Bringing about misfortunes and inauspicious energy, the best way to cure this is also metal placements. It could be 6 coins, windchimes, or even gold coloured mat to cure it if your main door is facing south east.

### CENTRE - STAR 6

This star may bring about travel and promotion. A bowl of fresh still water may be placed on this corner.

### NORTH WEST - STAR 7

Known for a robbery and fire hazard star, this is an inauspicious one to have especially in your kitchen. Be extra careful on your cooking activities.

### WEST - STAR 8

As this is the most auspicious star to have, you may enjoy more prosperity by having your front door facing west. Activate the area with moving water such as fountains, or any movements such as fan, television and audio sets.

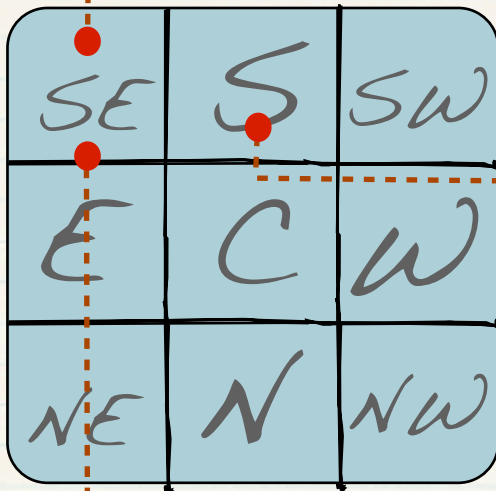
### NORTH EAST - STAR 9

This is another auspicious star- if you have this in your bedroom it may enhance your chance of having offsprings.

# FENG SHUI 2012

## GRAND DUKE JUPITER / TAI SUI 太岁

This year, the Grand Duke is sitting at 120°SE1, or E5 mountain. It is best not to offend the Grand Duke: avoid working desk facing south east or undergoing renovation in that area.



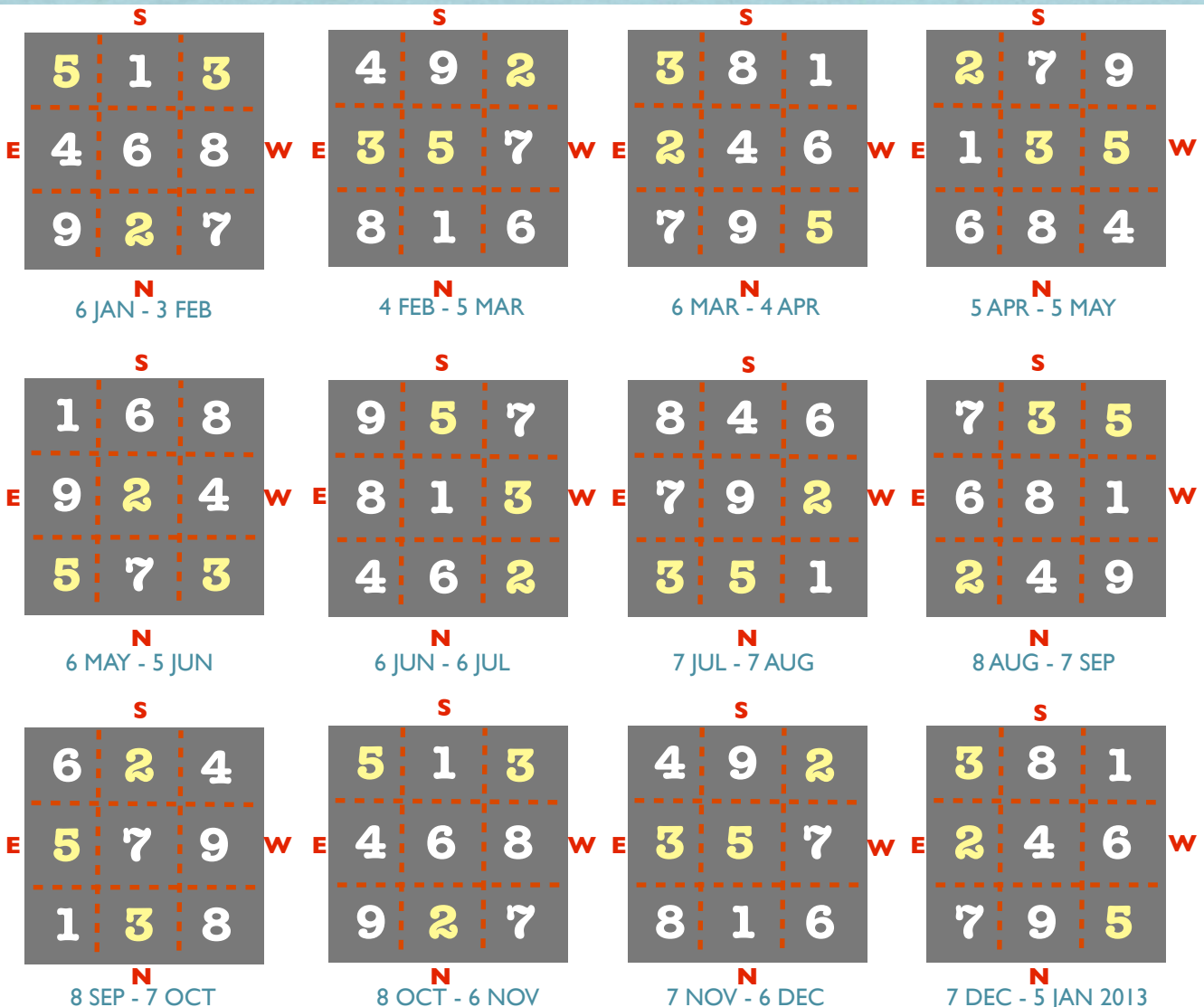
## THREE KILLINGS / SAN SHA 三煞

South is where San Sha is located for 2012. This is an area not to be disturbed by heavyworks and knocking either. If you are undergoing renovation, be careful with the south area. It is best to keep it quiet as not to activate inauspicious energy.

## CAI SHEN 财神

It is a belief that the annual 'God of Wealth' will bring wealth to those who pay respect to Him. During Lunar New Year eve (22 January 2012) at 23.00 hours, you can ask for blessings at various temples to the South East direction. One of the most popular place will be the Guan Yin Waterloo temple but as usual, Grand Master Vincent Koh favours to watch the procession at the Balestier Temple. You are all invited to join for the blessings as well!

Below are the 12 monthly flying stars for 2012. Please take note of stars 2,3 and 5 especially when it flies into your main door, or your bedroom



# PERSONAL NOTES 2012

## 1. Compatible animal signs 2012

Three animal signs in harmony with the dragon are:

**Rooster** 六合, **Monkey** 三合, **Rat** 三合

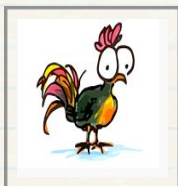
Those who are born in these years, depending on the overall birthchart, in general will have a smooth year with helpful people around.

## 2. Conflicting animal signs 2012

Below are those who are in conflict with the dragon:

**Dragon** 自刑, **Dog** 六冲, **Ox** 相破, **Rabbit** 相害

If you belong to these animal signs, you may face certain hiccups this year, or experience certain changes in some aspects of your life. Positively or negatively, again it will depend on your whole birth chart.



To 'appease' the dragon, you can place a golden/metal rooster at South East (112.5°- 127.5°) in your house at the living room. You may also place the rooster on your office desk.

## 3. Auspicious dates to resume business operation in 2012

Tuesday, 24 January 2012 (not suitable for Tiger)

Friday, 27 January 2012 (not suitable for Snake)

Sunday, 29 January 2012 (not suitable for Goat)

Tuesday, 31 January 2012 (not suitable for Rooster)

These are very general guidelines. For more details on your personal Four Pillars and Feng Shui, you can refer to 'Unveil Your Destiny' book by GM Vincent Koh or consult a professional Feng Shui consultant.

"May we wish you a prosperous Dragon Year 2012"

**Grand Master Vincent Koh**  
**Singapore Feng Shui Centre**

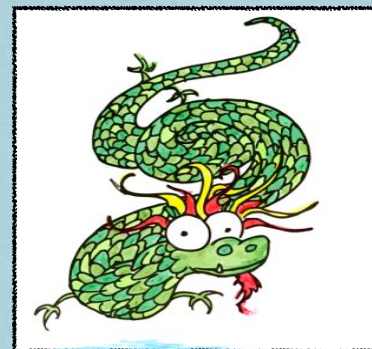
WRITTEN BY: MASTER ANITA ZOU

EDITED BY: GRAND MASTER VINCENT KOH

I AM BORN IN A

**DRAGON YEAR!**

1916, 1928, 1940, 1952,  
1964, 1976, 1988, 2000



## CHARACTERISTICS

Considered one of the most powerful animal sign, dragon people are idealistic and born leaders. They are usually strong on their own mindset, dislike to be controlled and sometimes can come across as arrogant and difficult to handle. But when their overall birthchart is balanced, they are the 'movers and shakers' and often become those who make a difference in this world.

## Summary for 2012

**Auspicious Directions:**  
west, north east, south

**Auspicious Colour:**  
red, peach and pink, green

**Auspicious Elements:**  
fire, wood

**Inauspicious Directions:**  
south east, north

**Quarrelsome sector:**  
south west

**Academic/romance sector:**  
east